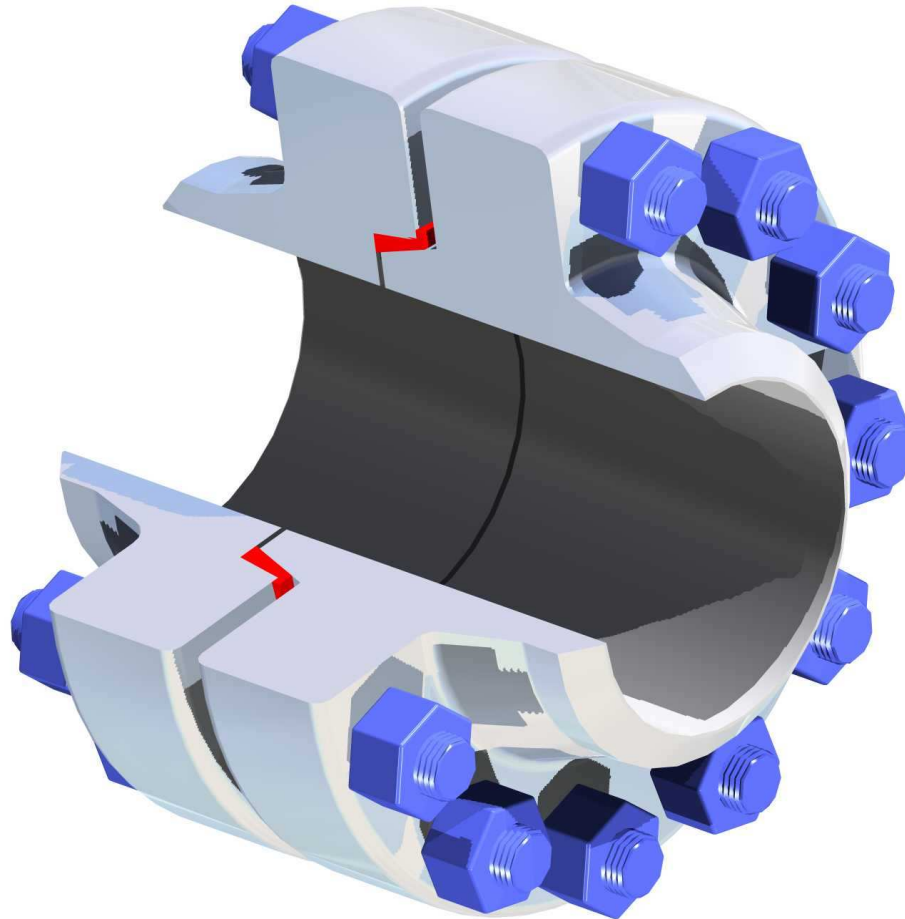




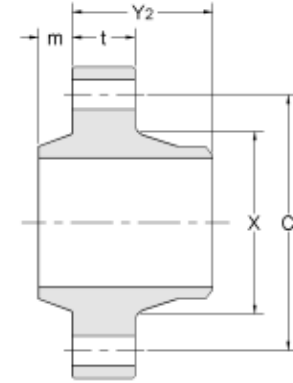
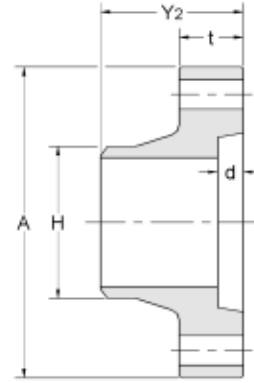
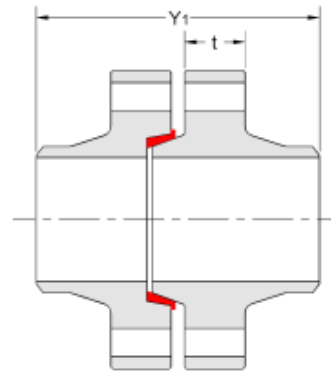
## *ANSI Pressure Ratings for Taper-Lok WN Connections*





# Class 150

285 PSI

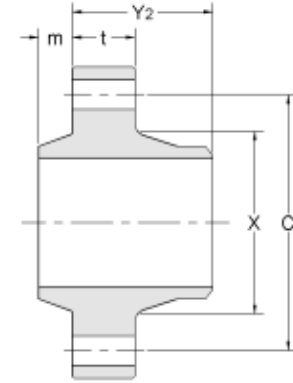
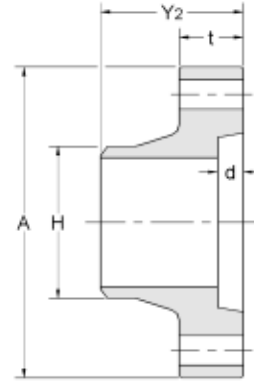
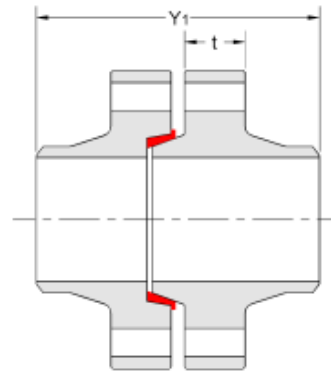


Nom. Pipe Size	Pres. Class	MAWP (psi)	WELD NECK SPECIFICATIONS (1)									BOLTING (1)				ASSEMBLY SPEC.		PART NUMBER			
			Flange OD	Max Bore (2)	Hub Dia. (3)	Weld End Dia. (3)	Flange Thick-ness (3)	Weld Neck Length (3)	Male Nose Length (4)	Female Pocket Depth (4)	Weld Neck Weight (lbs) (5)	No. of Bolts	Nom. Bolt Dia. (6)	Bolt Circle Dia. (6)	Stud Length	Set Weight (lbs) (5)	Set Length (5)	Female Weld Neck	Male Weld Neck	Seal Ring	Weld Neck Set
SYMBOL			A	(2)	X	H	(3)	(3)	(4)	(4)	(5)		(6)	C		Y1					
0.5	PC-1A	7941	3.50	STD	0.84	0.84	0.75	1.75	0.38	1/4	1.8	4	0.50	2.50	3.25	4.8	3.69	T7010A	T8010A	T2715G	T1310AWNA
0.75	PC-1A	5600	3.75	STD	1.05	1.05	0.75	1.81	0.38	1/4	2.1	4	0.50	2.69	3.25	5.4	3.81	T7010C	T8010C	T2715H	T1310CWNA
1	PC-1A	6961	4.13	STD	1.38	1.32	0.94	2.00	0.50	0.375	2.9	6	0.50	3.00	3.75	7.9	4.19	T7010E	T8010E	T2715J	T1310EWNA
1.25	PC-1A	5968	4.56	STD	1.81	1.66	1.00	2.13	0.50	0.375	3.9	6	0.50	3.44	3.75	9.9	4.44	T7010H	T8010H	T2716K	T1310HWNA
1.5	PC-1A	4762	5.13	STD	2.25	1.90	0.88	2.06	0.50	0.375	4.5	6	0.50	3.88	3.5	11.1	4.31	T7011A	T8011A	T2716A	T1311AWNA
2	PC-1A	6514	6.19	STD	2.81	2.38	1.31	2.69	0.56	0.4375	9.2	8	0.63	4.69	4.75	23.8	5.63	T7011D	T8011D	T2714A	T1311DWNA
2.5	PC-1A	4695	6.69	STD	3.31	2.88	1.19	2.75	0.56	0.4375	10.0	8	0.63	5.19	4.5	25.2	5.75	T7011H	T8011H	T2716B	T1311HWNA
3	PC-1A	3180	7.44	STD	4.06	3.50	1.13	2.94	0.69	0.5	11.9	8	0.63	5.94	4.5	29.1	6.19	T7012B	T8012B	T2712B	T1312BWNA
3.5	PC-1A	3773	7.94	STD	4.56	4.00	1.38	3.25	0.69	0.5	15.2	12	0.63	6.44	5	38.9	6.81	T7012F	T8012F	T2716C	T1312FWNA
4	PC-1	4133	9.19	STD	5.31	4.50	1.69	4.00	1.06	0.75	25.2	12	0.75	7.56	6	65.1	8.44	T70131	T80131	T27146	T13131WNA
5	PC-1	2864	10.25	STD	6.38	5.56	1.56	3.94	1.06	0.75	28.6	12	0.75	8.63	5.75	71.7	8.31	T70136	T80136	T27164	T13136WNA
6	PC-1	2802	11.38	STD	7.50	6.63	1.75	4.38	1.06	0.75	37.1	16	0.75	9.75	6.25	94.1	9.19	T70143	T80143	T27150	T13143WNA
8	PC-1	2172	13.38	STD	9.50	8.63	1.88	4.56	1.06	0.75	50.3	20	0.75	11.75	6.5	126.1	9.56	T70150	T80150	T27148	T13150WNA
10	PC-1	1734	15.50	STD	11.63	10.75	1.88	4.88	1.06	0.75	63.6	24	0.75	13.88	6.5	157.9	10.19	T70158	T80158	T27154	T13158WNA
12	PC-2	1747	18.00	STD	13.63	12.75	2.38	5.69	1.06	0.75	99.5	24	0.88	16.13	7.75	247.2	11.81	T70166	T80166	T27155	T13166WNA
14	PC-1	1231	18.88	STD	15.00	14.00	1.81	4.56	1.06	0.75	81.6	28	0.75	17.25	6.25	198.6	9.56	T70175	T80175	T27165	T13175WNA
16	PC-1	1092	20.88	STD	17.00	16.00	2.06	4.94	1.06	0.75	102.5	32	0.75	19.25	6.75	247.6	1.31	T70184	T80184	T27166	T13184WNA
18	PC-1	980	23.00	STD	19.13	18.00	2.13	5.38	1.06	0.75	123.3	36	0.75	21.38	7	295.1	11.19	T70193	T80193	T27167	T13193WNA
20	PC-1	890	25.00	STD	21.13	20.00	2.38	5.75	1.06	0.75	149.0	40	0.75	23.38	7.5	354.4	11.94	T70203	T80203	T27168	T13203WNA
22	PC-1	814	27.13	STD	23.25	22.00	2.38	6.00	1.06	0.75	170.3	44	0.75	25.50	7.5	402.5	12.44	T70223	T80223	T27201	T13223WNA
24	PC-1	751	29.13	STD	25.13	24.00	2.81	6.50	1.06	0.75	209.0	48	0.75	27.50	8.25	490.8	13.44	T70213	T80213	T27169	T13213WNA



# Class 300

740 PSI

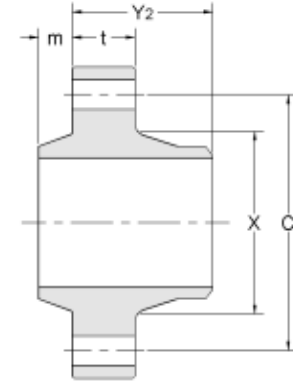
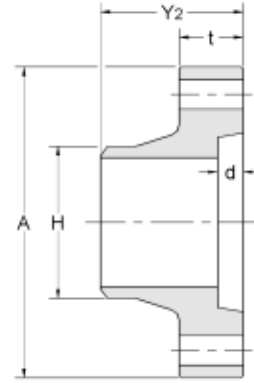
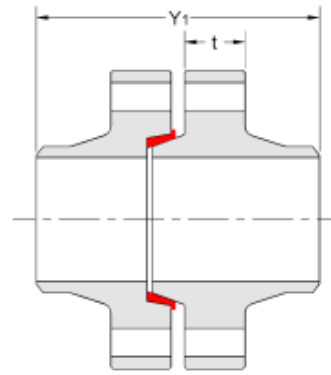


Nom. Pipe Size	Pres. Class	MAWP (psi)	WELD NECK SPECIFICATIONS (1)									BOLTING (1)				ASSEMBLY SPEC.		PART NUMBER			
			Flange OD	Max Bore	Hub Dia.	Weld End Dia.	Flange Thickness	Weld Neck Length	Male Nose Length	Female Pocket Depth	Weld Neck Weight (lbs)	No. of Bolts	Nom. Bolt Dia.	Bolt Circle Dia.	Stud Length	Set Weight (lbs)	Set Length	Female Weld Neck	Male Weld Neck	Seal Ring	Weld Neck Set
SYMBOL			A	(2)	X	H	(3)	(3)	(4)	(4)	(5)		(6)	C	(5)	Y1					
0.5	PC-1A	7941	3.50	STD	0.84	0.84	0.75	1.75	0.38	1/4	1.8	4	0.50	2.50	3.25	4.8	3.69	T7010A	T8010A	T2715G	T1310AWNA
0.75	PC-1A	5600	3.75	STD	1.05	1.05	0.75	1.81	0.38	1/4	2.1	4	0.50	2.69	3.25	5.4	3.81	T7010C	T8010C	T2715H	T1310CWNA
1	PC-1A	6961	4.13	STD	1.38	1.32	0.94	2.00	0.50	0.375	2.9	6	0.50	3.00	3.75	7.9	4.19	T7010E	T8010E	T2715J	T1310EWNA
1.25	PC-1A	5968	4.56	STD	1.81	1.66	1.00	2.13	0.50	0.375	3.9	6	0.50	3.44	3.75	9.9	4.44	T7010H	T8010H	T2716K	T1310HWNA
1.5	PC-1A	4762	5.13	STD	2.25	1.90	0.88	2.06	0.50	0.375	4.5	6	0.50	3.88	3.5	11.1	4.31	T7011A	T8011A	T2716A	T1311AWNA
2	PC-1A	6514	6.19	STD	2.81	2.38	1.31	2.69	0.56	0.4375	9.2	8	0.63	4.69	4.75	23.8	5.63	T7011D	T8011D	T2714A	T1311DWNA
2.5	PC-1A	4695	6.69	STD	3.31	2.88	1.19	2.75	0.56	0.4375	10.0	8	0.63	5.19	4.5	25.2	5.75	T7011H	T8011H	T2716B	T1311HWNA
3	PC-1A	3180	7.44	STD	4.06	3.50	1.13	2.94	0.69	0.5	11.9	8	0.63	5.94	4.5	29.1	6.19	T7012B	T8012B	T2712B	T1312BWNA
3.5	PC-1A	3773	7.94	STD	4.56	4.00	1.38	3.25	0.69	0.5	15.2	12	0.63	6.44	5	38.9	6.81	T7012F	T8012F	T2716C	T1312FWNA
4	PC-1	4133	9.19	STD	5.31	4.50	1.69	4.00	1.06	0.75	25.2	12	0.75	7.56	6	65.1	8.44	T70131	T80131	T27146	T13131WNA
5	PC-1	2864	10.25	STD	6.38	5.56	1.56	3.94	1.06	0.75	28.6	12	0.75	8.63	5.75	71.7	8.31	T70136	T80136	T27164	T13136WNA
6	PC-1	2802	11.38	STD	7.50	6.63	1.75	4.38	1.06	0.75	37.1	16	0.75	9.75	6.25	94.1	9.19	T70143	T80143	T27150	T13143WNA
8	PC-1	2172	13.38	STD	9.50	8.63	1.88	4.56	1.06	0.75	50.3	20	0.75	11.75	6.5	126.1	9.56	T70150	T80150	T27148	T13150WNA
10	PC-1	1734	15.50	STD	11.63	10.75	1.88	4.88	1.06	0.75	63.6	24	0.75	13.88	6.5	157.9	10.19	T70158	T80158	T27154	T13158WNA
12	PC-2	1747	18.00	STD	13.63	12.75	2.38	5.69	1.06	0.75	99.5	24	0.88	16.13	7.75	247.2	11.81	T70166	T80166	T27155	T13166WNA
14	PC-1	1231	18.88	STD	15.00	14.00	1.81	4.56	1.06	0.75	81.6	28	0.75	17.25	6.25	198.6	9.56	T70175	T80175	T27165	T13175WNA
16	PC-1	1092	20.88	STD	17.00	16.00	2.06	4.94	1.06	0.75	102.5	32	0.75	19.25	6.75	247.6	1.31	T70184	T80184	T27166	T13184WNA
18	PC-1	980	23.00	STD	19.13	18.00	2.13	5.38	1.06	0.75	123.3	36	0.75	21.38	7	295.1	11.19	T70193	T80193	T27167	T13193WNA
20	PC-1	890	25.00	STD	21.13	20.00	2.38	5.75	1.06	0.75	149.0	40	0.75	23.38	7.5	354.4	11.94	T70203	T80203	T27168	T13203WNA
22	PC-1	814	27.13	STD	23.25	22.00	2.38	6.00	1.06	0.75	170.3	44	0.75	25.50	7.5	402.5	12.44	T70223	T80223	T27201	T13223WNA
24	PC-1	751	29.13	STD	25.13	24.00	2.81	6.50	1.06	0.75	209.0	48	0.75	27.50	8.25	490.8	13.44	T70213	T80213	T27169	T13213WNA



# Class 400

990 PSI

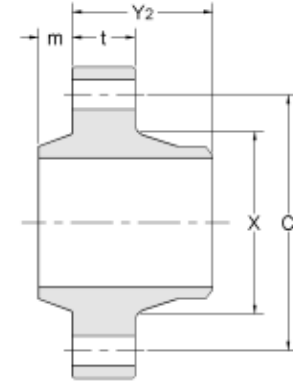
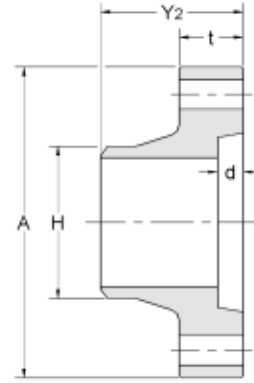
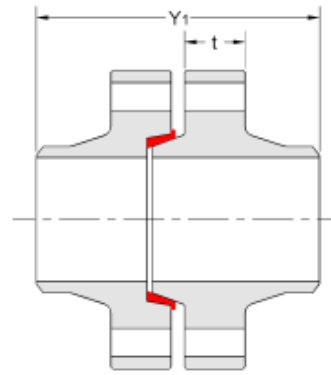


Nom. Pipe Size	Pres. Class	MAWP (psi)	WELD NECK SPECIFICATIONS (1)									BOLTING (1)				ASSEMBLY SPEC.		PART NUMBER			
			Flange OD	Max Bore	Hub Dia.	Weld End Dia.	Flange Thickness	Weld Neck Length	Male Nose Length	Female Pocket Depth	Weld Neck Weight (lbs)	No. of Bolts	Nom. Bolt Dia.	Bolt Circle Dia.	Stud Length	Set Weight (lbs)	Set Length	Female Weld Neck	Male Weld Neck	Seal Ring	Weld Neck Set
SYMBOL			A	(2)	X	H	(3)	(3)	(4)	(4)	(5)		(6)	C	(5)	Y1					
0.5	PC-1A	7941	3.50	STD	0.84	0.84	0.75	1.75	0.38	1/4	1.8	4	0.50	2.50	3.25	4.8	3.69	T7010A	T8010A	T2715G	T1310AWNA
0.75	PC-1A	5600	3.75	STD	1.05	1.05	0.75	1.81	0.38	1/4	2.1	4	0.50	2.69	3.25	5.4	3.81	T7010C	T8010C	T2715H	T1310CWNA
1	PC-1A	6961	4.13	STD	1.38	1.32	0.94	2.00	0.50	0.375	2.9	6	0.50	3.00	3.75	7.9	4.19	T7010E	T8010E	T2715J	T1310EWNA
1.25	PC-1A	5968	4.56	STD	1.81	1.66	1.00	2.13	0.50	0.375	3.9	6	0.50	3.44	3.75	9.9	4.44	T7010H	T8010H	T2716K	T1310HWNA
1.5	PC-1A	4762	5.13	STD	2.25	1.90	0.88	2.06	0.50	0.375	4.5	6	0.50	3.88	3.5	11.1	4.31	T7011A	T8011A	T2716A	T1311AWNA
2	PC-1A	6514	6.19	STD	2.81	2.38	1.31	2.69	0.56	0.4375	9.2	8	0.63	4.69	4.75	23.8	5.63	T7011D	T8011D	T2714A	T1311DWNA
2.5	PC-1A	4695	6.69	STD	3.31	2.88	1.19	2.75	0.56	0.4375	10.0	8	0.63	5.19	4.5	25.2	5.75	T7011H	T8011H	T2716B	T1311HWNA
3	PC-1A	3180	7.44	STD	4.06	3.50	1.13	2.94	0.69	0.5	11.9	8	0.63	5.94	4.5	29.1	6.19	T7012B	T8012B	T2712B	T1312BWNA
3.5	PC-1A	3773	7.94	STD	4.56	4.00	1.38	3.25	0.69	0.5	15.2	12	0.63	6.44	5	38.9	6.81	T7012F	T8012F	T2716C	T1312FWNA
4	PC-1	4133	9.19	STD	5.31	4.50	1.69	4.00	1.06	0.75	25.2	12	0.75	7.56	6	65.1	8.44	T70131	T80131	T27146	T13131WNA
5	PC-1	2864	10.25	STD	6.38	5.56	1.56	3.94	1.06	0.75	28.6	12	0.75	8.63	5.75	71.7	8.31	T70136	T80136	T27164	T13136WNA
6	PC-1	2802	11.38	STD	7.50	6.63	1.75	4.38	1.06	0.75	37.1	16	0.75	9.75	6.25	94.1	9.19	T70143	T80143	T27150	T13143WNA
8	PC-1	2172	13.38	STD	9.50	8.63	1.88	4.56	1.06	0.75	50.3	20	0.75	11.75	6.5	126.1	9.56	T70150	T80150	T27148	T13150WNA
10	PC-1	1734	15.50	STD	11.63	10.75	1.88	4.88	1.06	0.75	63.6	24	0.75	13.88	6.5	157.9	10.19	T70158	T80158	T27154	T13158WNA
12	PC-2	1747	18.00	STD	13.63	12.75	2.38	5.69	1.06	0.75	99.5	24	0.88	16.13	7.75	247.2	11.81	T70166	T80166	T27155	T13166WNA
14	PC-1	1231	18.88	STD	15.00	14.00	1.81	4.56	1.06	0.75	81.6	28	0.75	17.25	6.25	198.6	9.56	T70175	T80175	T27165	T13175WNA
16	PC-1	1092	20.88	STD	17.00	16.00	2.06	4.94	1.06	0.75	102.5	32	0.75	19.25	6.75	247.6	1.31	T70184	T80184	T27166	T13184WNA
18	PC-2	1209	23.50	STD	19.13	18.00	2.63	5.88	1.06	0.75	157.0	32	0.88	21.63	8.25	381.1	12.19	T70194	T80194	T27167	T13194WNA
20	PC-3	1299	26.00	STD	21.13	20.00	3.25	6.63	1.06	0.75	222.3	32	1.00	23.88	9.75	545.1	13.69	T70204	T80204	T27168	T13204WNA
22	PC-5	1595	29.25	Sch 10	23.25	22.00	3.63	7.25	1.06	0.75	372.2	28	1.25	26.75	11	899.2	14.94	T70224	T80224	T27201	T13224WNA
24	PC-3	1142	30.88	STD	26.00	24.00	2.81	7.81	1.06	0.75	298.7	40	1.00	28.75	9	715.1	16.06	T70214	T80214	T27169	T13214WNA



# Class 600

1480 PSI

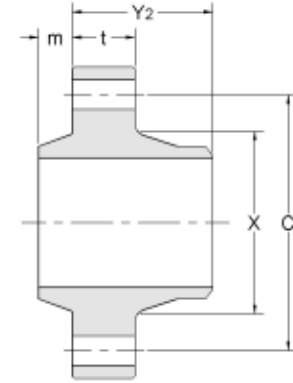
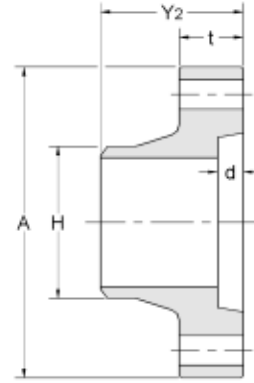
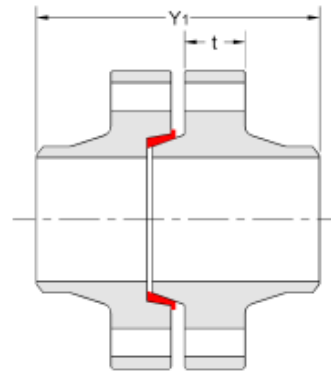


Nom. Pipe Size	Pres. Class	MAWP (psi)	WELD NECK SPECIFICATIONS (1)									BOLTING (1)				ASSEMBLY SPEC.		PART NUMBER			
			Flange OD	Max Bore	Hub Dia.	Weld End Dia.	Flange Thickness	Weld Neck Length	Male Nose Length	Female Pocket Depth	Weld Neck Weight (lbs)	No. of Bolts	Nom. Bolt Dia.	Bolt Circle Dia.	Stud Length	Set Weight (lbs)	Set Length	Female Weld Neck	Male Weld Neck	Seal Ring	Weld Neck Set
SYMBOL			A	(2)	X	H	(3)	(3)	(4)	(4)	(5)		(6)	C	(5)	Y1					
0.5	PC-1A	7941	3.50	STD	0.84	0.84	0.75	1.75	0.38	1/4	1.8	4	0.50	2.50	3.25	4.8	3.69	T7010A	T8010A	T2715G	T1310AWNA
0.75	PC-1A	5600	3.75	STD	1.05	1.05	0.75	1.81	0.38	1/4	2.1	4	0.50	2.69	3.25	5.4	3.81	T7010C	T8010C	T2715H	T1310CWNA
1	PC-1A	6961	4.13	STD	1.38	1.32	0.94	2.00	0.50	0.375	2.9	6	0.50	3.00	3.75	7.9	4.19	T7010E	T8010E	T2715J	T1310EWNA
1.25	PC-1A	5968	4.56	STD	1.81	1.66	1.00	2.13	0.50	0.375	3.9	6	0.50	3.44	3.75	9.9	4.44	T7010H	T8010H	T2716K	T1310HWNA
1.5	PC-1A	4762	5.13	STD	2.25	1.90	0.88	2.06	0.50	0.375	4.5	6	0.50	3.88	3.5	11.1	4.31	T7011A	T8011A	T2716A	T1311AWNA
2	PC-1A	6514	6.19	STD	2.81	2.38	1.31	2.69	0.56	0.4375	9.2	8	0.63	4.69	4.75	23.8	5.63	T7011D	T8011D	T2714A	T1311DWNA
2.5	PC-1A	4695	6.69	STD	3.31	2.88	1.19	2.75	0.56	0.4375	10.0	8	0.63	5.19	4.5	25.2	5.75	T7011H	T8011H	T2716B	T1311HWNA
3	PC-1A	3180	7.44	STD	4.06	3.50	1.13	2.94	0.69	0.5	11.9	8	0.63	5.94	4.5	29.1	6.19	T7012B	T8012B	T2712B	T1312BWNA
3.5	PC-1A	3773	7.94	STD	4.56	4.00	1.38	3.25	0.69	0.5	15.2	12	0.63	6.44	5	38.9	6.81	T7012F	T8012F	T2716C	T1312FWNA
4	PC-1	4133	9.19	STD	5.31	4.50	1.69	4.00	1.06	0.75	25.2	12	0.75	7.56	6	65.1	8.44	T70131	T80131	T27146	T13131WNA
5	PC-1	2864	10.25	STD	6.38	5.56	1.56	3.94	1.06	0.75	28.6	12	0.75	8.63	5.75	71.7	8.31	T70136	T80136	T27164	T13136WNA
6	PC-1	2802	11.38	STD	7.50	6.63	1.75	4.38	1.06	0.75	37.1	16	0.75	9.75	6.25	94.1	9.19	T70143	T80143	T27150	T13143WNA
8	PC-1	2172	13.38	STD	9.50	8.63	1.88	4.56	1.06	0.75	50.3	20	0.75	11.75	6.5	126.1	9.56	T70150	T80150	T27148	T13150WNA
10	PC-1	1734	15.50	STD	11.63	10.75	1.88	4.88	1.06	0.75	63.6	24	0.75	13.88	6.5	157.9	10.19	T70158	T80158	T27154	T13158WNA
12	PC-2	1747	18.00	STD	13.63	12.75	2.38	5.69	1.06	0.75	99.5	24	0.88	16.13	7.75	247.2	11.81	T70166	T80166	T27155	T13166WNA
14	PC-3	1926	19.88	STD	15.00	14.00	2.75	5.50	1.06	0.75	133.0	24	1.00	17.75	8.75	335.8	11.44	T70177	T80177	T27165	T13177WNA
16	PC-3	1494	21.88	STD	17.00	16.00	2.81	5.69	1.06	0.75	155.3	24	1.00	19.75	9	381.6	11.81	T70185	T80185	T27166	T13185WNA
18	PC-4	1576	24.38	STD	19.13	18.00	3.31	6.56	1.06	0.75	217.8	24	1.13	22.13	10.25	535.9	13.56	T70195	T80195	T27167	T13195WNA
20	PC-5	1643	27.13	STD	21.13	20.00	3.94	7.31	1.06	0.75	310.8	24	1.25	24.63	11.75	759.7	15.06	T70205	T80205	T27168	T13205WNA
22	PC-5	1595	29.25	Sch 10	23.25	22.00	3.63	7.25	1.06	0.75	372.2	28	1.25	26.75	11	899.2	14.94	T70224	T80224	T27201	T13224WNA
24	PC-5	1540	32.00	STD	26.00	24.00	4.00	9.00	1.06	0.75	448.4	32	1.25	29.50	11.75	1081.8	18.44	T70215	T80215	T27169	T13215WNA



# Class 900

2220 PSI

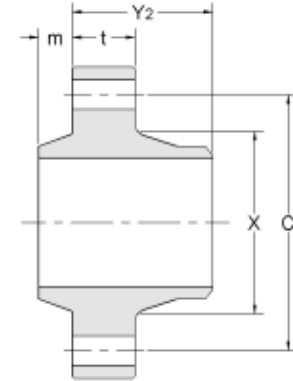
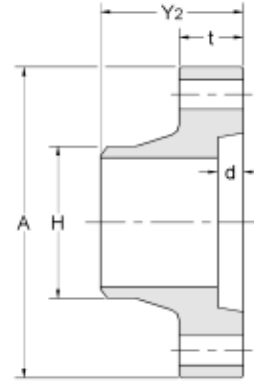
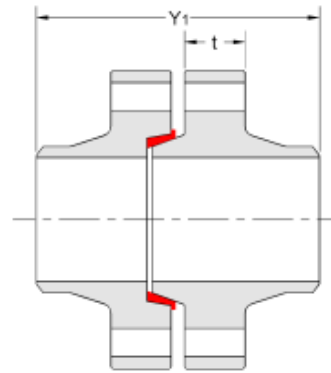


Nom. Pipe Size	Pres. Class	MAWP (psi)	WELD NECK SPECIFICATIONS (1)									BOLTING (1)				ASSEMBLY SPEC.		PART NUMBER			
			Flange OD	Max Bore	Hub Dia.	Weld End Dia.	Flange Thickness	Weld Neck Length	Male Nose Length	Female Pocket Depth	Weld Neck Weight (lbs)	No. of Bolts	Nom. Bolt Dia.	Bolt Circle Dia.	Stud Length	Set Weight (lbs)	Set Length	Female Weld Neck	Male Weld Neck	Seal Ring	Weld Neck Set
SYMBOL			A	(2)	X	H	(3) t	(3) Y2	(4) m	(4) d	(5)		(6)	C	(5)	Y1					
0.5	PC-1A	7941	3.50	STD	0.84	0.84	0.75	1.75	0.38	1/4	1.8	4	0.50	2.50	3.25	4.8	3.69	T7010A	T8010A	T2715G	T1310AWNA
0.75	PC-1A	5600	3.75	STD	1.05	1.05	0.75	1.81	0.38	1/4	2.1	4	0.50	2.69	3.25	5.4	3.81	T7010C	T8010C	T2715H	T1310CWNA
1	PC-1A	6961	4.13	STD	1.38	1.32	0.94	2.00	0.50	0.375	2.9	6	0.50	3.00	3.75	7.9	4.19	T7010E	T8010E	T2715J	T1310EWNA
1.25	PC-1A	5968	4.56	STD	1.81	1.66	1.00	2.13	0.50	0.375	3.9	6	0.50	3.44	3.75	9.9	4.44	T7010H	T8010H	T2716K	T1310HWNA
1.5	PC-1A	4762	5.13	STD	2.25	1.90	0.88	2.06	0.50	0.375	4.5	6	0.50	3.88	3.5	11.1	4.31	T7011A	T8011A	T2716A	T1311AWNA
2	PC-1A	6514	6.19	STD	2.81	2.38	1.31	2.69	0.56	0.4375	9.2	8	0.63	4.69	4.75	23.8	5.63	T7011D	T8011D	T2714A	T1311DWNA
2.5	PC-1A	4695	6.69	STD	3.31	2.88	1.19	2.75	0.56	0.4375	10.0	8	0.63	5.19	4.5	25.2	5.75	T7011H	T8011H	T2716B	T1311HWNA
3	PC-1A	3180	7.44	STD	4.06	3.50	1.13	2.94	0.69	0.5	11.9	8	0.63	5.94	4.5	29.1	6.19	T7012B	T8012B	T2712B	T1312BWNA
3.5	PC-1A	3773	7.94	STD	4.56	4.00	1.38	3.25	0.69	0.5	15.2	12	0.63	6.44	5	38.9	6.81	T7012F	T8012F	T2716C	T1312FWNA
4	PC-1	4133	9.19	STD	5.31	4.50	1.69	4.00	1.06	0.75	25.2	12	0.75	7.56	6	65.1	8.44	T70131	T80131	T27146	T13131WNA
5	PC-1	2864	10.25	STD	6.38	5.56	1.56	3.94	1.06	0.75	28.6	12	0.75	8.63	5.75	71.7	8.31	T70136	T80136	T27164	T13136WNA
6	PC-1	2802	11.38	STD	7.50	6.63	1.75	4.38	1.06	0.75	37.1	16	0.75	9.75	6.25	94.1	9.19	T70143	T80143	T27150	T13143WNA
8	PC-3	3170	14.38	STD	9.50	8.63	2.50	5.19	1.06	0.75	76.9	16	1.00	12.25	8.25	198.5	10.81	T70151	T80151	T27148	T13151WNA
10	PC-3	2637	16.50	STD	11.63	10.75	2.69	5.69	1.06	0.75	100.5	20	1.00	14.38	8.75	258.6	11.81	T70159	T80159	T27154	T13159WNA
12	PC-4	2530	19.13	STD	13.88	12.75	3.00	6.69	1.06	0.75	147.9	20	1.13	16.88	9.5	375.5	13.81	T70167	T80167	T27155	T13167WNA
14	PC-5	2706	21.13	Sch 40	15.13	14.00	3.56	6.50	1.06	0.75	208.8	20	1.25	18.63	11	527.0	13.44	T70178	T80178	T27165	T13178WNA
16	PC-6	2610	23.63	XS	17.13	16.00	3.94	7.00	1.06	0.75	280.5	20	1.38	20.88	12	704.4	14.44	T70187	T80187	T27166	T13187WNA
18	PC-7	2535	26.13	Sch 40	19.13	18.00	4.31	7.56	1.06	0.75	367.2	20	1.50	23.13	13	918.6	15.56	T70197	T80197	T27167	T13197WNA
20	PC-7	2484	28.13	Sch 40	21.13	20.00	4.75	8.13	1.06	0.75	438.4	24	1.50	25.13	13.75	1108.1	16.69	T70207	T80207	T27168	T13207WNA
22	PC-8	2472	31.13	20.750	23.63	22.00	4.81	9.00	1.06	0.75	567.4	24	1.63	27.88	14.25	1415.0	18.44	T70225	T80225	T27201	T13225WNA
24	PC-9	2462	34.00	Sch 60	26.00	24.00	4.88	9.88	1.06	0.75	767.4	24	1.75	30.50	14.5	1873.5	20.19	T70217	T80217	T27169	T13217WNA



# Class 1500

3705 PSI

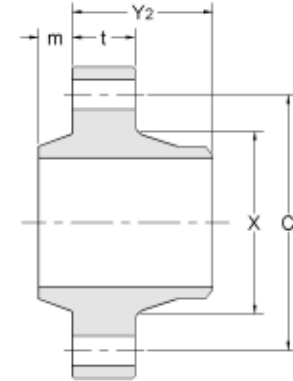
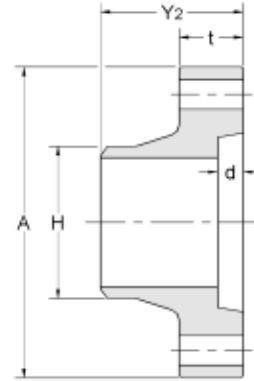
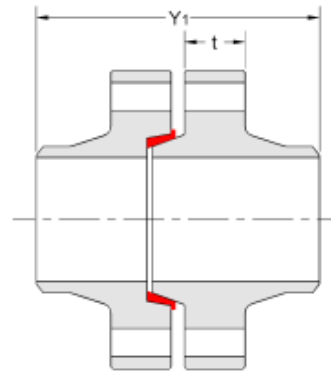


Nom. Pipe Size	Pres. Class	MAWP (psi)	WELD NECK SPECIFICATIONS (1)									BOLTING (1)				ASSEMBLY SPEC.		PART NUMBER			
			Flange OD	Max Bore (2)	Hub Dia. (3)	Weld End Dia. (3)	Flange Thick-ness (3)	Weld Neck Length (3)	Male Nose Length (4)	Female Pocket Depth (4)	Weld Neck Weight (lbs) (5)	No. of Bolts	Nom. Bolt Dia. (6)	Bolt Circle Dia. (6)	Stud Length	Set Weight (lbs) (5)	Set Length (5)	Female Weld Neck	Male Weld Neck	Seal Ring	Weld Neck Set
SYMBOL			A	(2)	X	H	(3)	(3)	(4)	(4)	(5)		(6)	C		Y1					
0.5	PC-1A	7941	3.50	STD	0.84	0.84	0.75	1.75	0.38	1/4	1.8	4	0.50	2.50	3.25	4.8	3.69	T7010A	T8010A	T2715G	T1310AWNA
0.75	PC-1A	5600	3.75	STD	1.05	1.05	0.75	1.81	0.38	1/4	2.1	4	0.50	2.69	3.25	5.4	3.81	T7010C	T8010C	T2715H	T1310CWNA
1	PC-1A	6961	4.13	STD	1.38	1.32	0.94	2.00	0.50	0.375	2.9	6	0.50	3.00	3.75	7.9	4.19	T7010E	T8010E	T2715J	T1310EWNA
1.25	PC-1A	5968	4.56	STD	1.81	1.66	1.00	2.13	0.50	0.375	3.9	6	0.50	3.44	3.75	9.9	4.44	T7010H	T8010H	T2716K	T1310HWNA
1.5	PC-1A	4762	5.13	STD	2.25	1.90	0.88	2.06	0.50	0.375	4.5	6	0.50	3.88	3.5	11.1	4.31	T7011A	T8011A	T2716A	T1311AWNA
2	PC-1A	6514	6.19	STD	2.81	2.38	1.31	2.69	0.56	0.4375	9.2	8	0.63	4.69	4.75	23.8	5.63	T7011D	T8011D	T2714A	T1311DWNA
2.5	PC-1A	4695	6.69	STD	3.31	2.88	1.19	2.75	0.56	0.4375	10.0	8	0.63	5.19	4.5	25.2	5.75	T7011H	T8011H	T2716B	T1311HWNA
3	PC-2A	4754	7.94	XS	4.06	3.50	1.44	3.25	0.69	0.5	17.5	8	0.75	6.31	5.5	43.7	6.81	T7012C	T8012C	T2712B	T1312CWNA
3.5	PC-1A	3773	7.94	STD	4.56	4.00	1.38	3.25	0.69	0.5	15.2	12	0.63	6.44	5	38.9	6.81	T7012F	T8012F	T2716C	T1312FWNA
4	PC-1	4133	9.19	STD	5.31	4.50	1.69	4.00	1.06	0.75	25.2	12	0.75	7.56	6	65.1	8.44	T70131	T80131	T27146	T13131WNA
5	PC-2	3974	10.75	STD	6.38	5.56	2.00	4.38	1.06	0.75	38.9	12	0.88	8.88	7	100.3	9.19	T70137	T80137	T27164	T13137WNA
6	PC-3	3835	12.38	STD	7.50	6.63	2.25	4.88	1.06	0.75	56.5	12	1.00	10.25	7.75	145.2	10.19	T70144	T80144	T27150	T13144WNA
8	PC-5	4009	15.75	Sch 60	9.75	8.63	2.88	5.94	1.06	0.75	118.0	12	1.25	13.25	9.5	296.0	12.31	T70152	T80152	T27148	T13152WNA
10	PC-6	4422	18.50	Sch 100	11.88	10.75	3.69	7.06	1.06	0.75	206.7	16	1.38	15.75	11.5	524.3	14.56	T70161	T80161	T27154	T13161WNA
12	PC-7	3907	20.88	Sch 80	13.88	12.75	4.00	7.69	1.06	0.75	268.1	16	1.50	17.88	12.25	678.2	15.81	T70169	T80169	T27155	T13169WNA
14	PC-8	3915	22.63	Sch 80	15.13	14.00	4.38	7.31	1.06	0.75	330.9	16	1.63	19.38	13.25	840.2	15.06	T70180	T80180	T27165	T13180WNA
16	PC-10	4165	25.75	Sch 100	17.13	16.00	5.13	8.19	1.69	1.3125	509.8	16	1.88	22.00	15.5	1299.1	17.00	T70190	T80190	T27191	T13190WNA
18	PC-11	3825	28.50	Sch 100	19.13	18.00	5.50	8.75	1.56	1.1875	668.3	16	2.00	24.50	16.5	1674.1	18.06	T70200	T80200	T27188	T13200WNA
20	PC-12	4036	31.50	Sch 100	21.13	20.00	6.31	9.69	1.69	1.3125	919.9	16	2.25	27.00	18.75	2319.8	20.00	T70210	T80210	T27192	T13210WNA
22	PC-13	4211	34.50	19.000	23.63	22.00	6.81	11.00	1.56	1.1875	1224.6	16	2.50	29.75	20	3085.0	22.56	T70227	T80227	T27202	T13227WNA
24	PC-14	4011	38.00	Sch 120	26.00	24.00	6.94	11.94	1.69	1.3125	1596.2	16	2.75	32.75	21	4002.3	24.50	T70220	T80220	T27193	T13220WNA



# Class 2500

6170 PSI



Nom. Pipe Size	Pres. Class	MAWP (psi)	WELD NECK SPECIFICATIONS (1)									BOLTING (1)				ASSEMBLY SPEC.		PART NUMBER			
			Flange OD	Max Bore	Hub Dia.	Weld End Dia.	Flange Thickness	Weld Neck Length	Male Nose Length	Female Pocket Depth	Weld Neck Weight (lbs)	No. of Bolts	Nom. Bolt Dia.	Bolt Circle Dia.	Stud Length	Set Weight (lbs)	Set Length	Female Weld Neck	Male Weld Neck	Seal Ring	Weld Neck Set
SYMBOL			A	(2)	X	H	(3) t	(3) Y2	(4) m	(4) d	(5)		(6)	C	(5)	Y1					
0.5	PC-1A	7941	3.50	STD	0.84	0.84	0.75	1.75	0.38	1/4	1.8	4	0.50	2.50	3.25	4.8	3.69	T7010A	T8010A	T2715G	T1310AWNA
0.75	PC-2A	11201	3.75	XS	1.05	1.05	1.06	2.13	0.38	1/4	2.8	6	0.50	2.69	4	7.6	4.44	T7010D	T8010D	T2715H	T1310DWNA
1	PC-1A	6961	4.13	STD	1.38	1.32	0.94	2.00	0.50	0.375	2.9	6	0.50	3.00	3.75	7.9	4.19	T7010E	T8010E	T2715J	T1310EWNA
1.25	PC-2A	7957	4.56	XS	1.81	1.66	1.19	2.31	0.50	0.375	4.5	8	0.50	3.44	4.25	11.9	4.81	T7010J	T8010J	T2716K	T1310JWNA
1.5	PC-2A	6349	5.13	STD	2.25	1.90	1.06	2.25	0.50	0.375	5.2	8	0.50	3.88	4	13.3	4.69	T7011B	T8011B	T2716A	T1311BWNA
2	PC-1A	6514	6.19	STD	2.81	2.38	1.31	2.69	0.56	0.4375	9.2	8	0.63	4.69	4.75	23.8	5.63	T7011D	T8011D	T2714A	T1311DWNA
2.5	PC-2A	7019	7.19	STD	3.31	2.88	1.69	3.25	0.56	0.4375	15.8	8	0.75	5.56	6	40.6	6.75	T7011J	T8011J	T2716B	T1311JWNA
3	PC-3A	6596	8.44	Sch 160	4.06	3.50	1.75	3.56	0.69	0.5	24.5	8	0.88	6.56	6.25	62.6	7.44	T7012D	T8012D	T2712B	T1312DWNA
3.5	PC-4A	6861	9.44	XS	4.56	4.00	2.13	4.00	0.69	0.5	34.4	8	1.00	7.31	7.5	89.0	8.31	T7012H	T8012H	T2716C	T1312HWNA
4	PC-4	6642	10.75	Sch 120	5.50	4.50	2.25	4.81	1.06	0.75	50.7	8	1.13	8.50	8	129.8	1.06	T70133	T80133	T27146	T13133WNA
5	PC-4	6904	11.94	Sch 120	6.69	5.56	2.69	5.50	1.06	0.75	70.4	12	1.13	9.69	9	186.2	11.44	T70139	T80139	T27164	T13139WNA
6	PC-5	6466	13.75	Sch 120	7.75	6.63	3.06	6.06	1.06	0.75	104.8	12	1.25	11.25	10	270.8	12.56	T70146	T80146	T27150	T13146WNA
8	PC-8	7249	17.63	6.375	9.75	8.63	4.13	7.19	1.69	1.3125	240.5	12	1.63	14.38	13	616.1	15.00	T70155	T80155	T27189	T13155WNA
10	PC-10	6616	21.25	Sch 160	11.88	10.75	4.94	8.31	1.56	1.1875	401.0	12	1.88	17.50	15	1005.7	17.19	T70163	T80163	T27186	T13163WNA
12	PC-12	7139	24.75	Sch 140	13.88	12.75	6.25	9.94	1.69	1.3125	652.1	12	2.25	20.25	18.5	1661.3	20.50	T70172	T80172	T27190	T13172WNA
14	PC-11	6180	25.81	11.000	15.13	14.00	6.06	9.00	1.56	1.1875	693.4	16	2.00	21.75	17.5	1738.3	18.56	T70183	T80183	T27187	T13183WNA
16	PC-12	6189	28.88	12.500	17.13	16.00	6.88	9.94	1.69	1.3125	973.4	16	2.25	24.38	19.75	2444.7	20.50	T70192	T80192	T27191	T13192WNA
18	PC-13	6195	31.69	13.874	19.13	18.00	7.63	10.88	1.94	1.5	1292.7	16	2.50	26.88	21.75	3263.5	22.44	T70202	T80202	T27195	T13202WNA

## Inventory Rationalization

### Flange Rationalization

NPS	Class 150	Class 300	Class 400	Class 600	Class 900	Class 1500	Class 2500
0.5	PC-1A						
0.75	PC-1A					PC-2A	
1	PC-1A						
1.25	PC-1A					PC-2A	
1.5	PC-1A					PC-2A	
2	PC-1A						
2.5	PC-1A					PC-2A	
3	PC-1A				PC-2A	PC-3A	
3.5	PC-1A					PC-4A	
4	PC-1					PC-4	
5	PC-1				PC-2	PC-4	
6	PC-1				PC-3	PC-5	
8	PC-1			PC-3	PC-5	PC-8	
10	PC-1			PC-3	PC-6	PC-10	
12	PC-2			PC-4	PC-7	PC-12	
14	PC-1		PC-3	PC-5	PC-8	PC-11	
16	PC-1		PC-3	PC-6	PC-10	PC-12	
18	PC-1	PC-2	PC-4	PC-7	PC-11	PC-13	
20	PC-1	PC-3	PC-5	PC-7	PC-12		
22	PC-1	PC-5		PC-8	PC-13		
24	PC-1	PC-3	PC-5	PC-9	PC-14		

### Gasket Rationalization

NPS	Class 150	Class 300	Class 400	Class 600	Class 900	Class 1500	Class 2500
0.5	T2715G						
0.75	T2715H						
1	T2715J						
1.25	T2716K						
1.5	T2716A						
2	T2714A						
2.5	T2716B						
3	T2712B						
3.5	T2716C						
4	T27146						
5	T27164						
6	T27150						
8	T27148						T27189
10	T27154						T27186
12	T27155						T27190
14	T27165						T27187
16	T27166				T27191		T27191
18	T27167				T27188		T27195
20	T27168				T27192		
22	T27201				T27202		
24	T27169				T27193		

***Taper-Lok Connections Replace: RTJ, Raised Face, Flat Face, Full Face flanges. Taper-Loks require only one type of gasket, the patented Taper-Lok Seal, so there is no need to guess what gasket will work for your application. Taper-Lok seals replace the need to stock, rasised face, rtj, spiral round, and all other types of gaskets.***